




Clark Electric Cooperative

Your Touchstone Energy® Partner 

News from the Manager

A busy summer, leading into a busy fall

Summer storms, heat, and electric demands were all concerns of ours this past summer. As I write this, summer is half gone and we just had a much needed rainfall last night, the first in weeks. The crops are looking pretty good and the building season is in full swing.

Some powerful storms have gone through our area in late spring and early summer, enough for the federal government to declare all the area we serve as a disaster area. With one storm we received help from Taylor Electric personnel, but the last big one, no other cooperatives were able to send help because they were hit also. Many cooperatives did share help as they had their systems fixed with others that were worse hit than Clark was. We did get all our members hooked back up in a reasonable time and spent many days cleaning up and replacing broken poles. Thanks to all our members who were in the areas hit the most—your patience is very much appreciated.

We remind our members who have critical medical conditions to let us know if you have life-support equipment in your home so we can list it on our priority restoration group. Many times we have to work on the larger areas to restore power to the most possible, and then we work with individual outages.

There have been no emergency shortages of electricity so far this summer. Dairyland Power

“Let us know if you have life-support equipment in your home so we can list it on our priority restoration group.”

Cooperative’s two new combustion units at Elk Mound, Wisconsin, helped get us through the heat of the summer. There was a considerable amount of controlling of water heaters but “no black outs.”

Our construction work is as busy as ever, and we encourage members who are planning new services to homes, cabins, or new commercial businesses to contact us as soon as possible. Some paper work needs to be done prior to scheduling, and getting us lined up early avoids the big rush in the fall. It seems crazy to be talking about this fall when we are in the heat of the summer, but time goes fast.

The Automated Meter Reading system is moving forward. Only those members on our Time-of-Day rate will be switched to the new meter system, hopefully starting early this fall. (There’s that fall season again.) All of these members either have received or will receive a letter explaining the new system. The peak periods for the Time-of-Day accounts will remain the same in the morning, 6:30 to 9:30 a.m., but the evening peak hours will be extended by one hour, 5:30 to 9:30 p.m. rather than 8:30 p.m. Hopefully next year we will be looking at a system for the balance of our members.

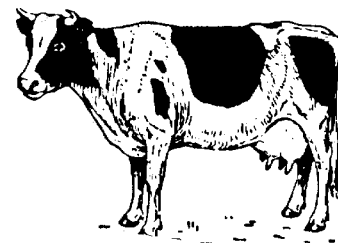
I have mentioned previously that we would be obtaining some long-term loans for the cooperative. We are currently putting the documentation together for a Rural Utilities Service loan (formerly REA) and a loan from the National Rural Utilities Cooperative Finance Corp. (CFC). As reported at the annual meeting, we need to convert almost \$2 million dollars of short-term loans to long-term and have an additional \$2 million available for future construction work.

(Continued on page 15)



Dairyland’s new Elk Mound gas combustion power plants will help the system provide peak power during high usage times and will also improve Dairyland system reliability.

Stray Voltage



Concerned about stray voltage on your farm?

Are you concerned about stray voltage on your farm? Well, we are. If you think you are having a problem with stray voltage, please contact our office immediately. Your board of directors has made it a priority to actively investigate all concerns of stray voltage.

Once our office is contacted, we will come out and work with the farmer to determine the levels of concern, make any changes or repairs that can immediately be done, then monitor the farm and make any other necessary changes. The important part in solving a stray-voltage problem is the teamwork between the farmer and our stray-voltage line personnel. Another important person on the team is your electrician, who needs to be part of this process.

Think of your farm wiring as a piece of equipment, just like your tractor. You need to perform maintenance on your equipment regularly to keep it operating properly. To keep your electrical system operating properly on your farm, you need to keep checking it. Remember, we're only a phone call away. Call our operations department and ask us to check your farm for stray voltage.

Warning Signs of Stray Voltage

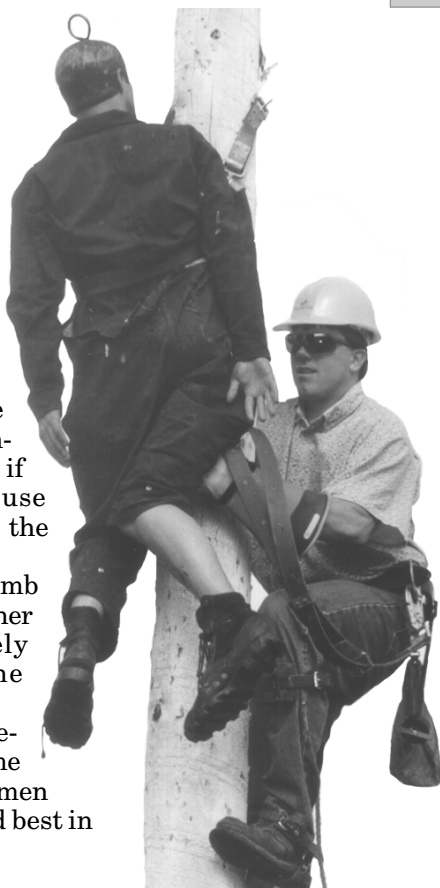
- Excessive or unusual nervousness
- Abnormal behavior around any metal objects
- Animals not drinking or eating, as they should
- A drop in milk production
- Increased somatic cell count
- Reduced weight gain
- A feeling of a shock or a tingling sensation when touching pipes or equipment

Safety First

Lineman Jon Ocker is pictured here practicing a pole-top rescue, an important skill that all linemen know and practice. Linemen practice these rescue skills in a controlled environment, but if they have to actually use them, it's usually not in the best of conditions.

The task here is to climb the pole and secure the other lineman and then safely lower him down to the ground.

The training the linemen go through all the time pays off, because our linemen are some of the safest and best in the business.



For information on
Clark Electric Cooperative's
Dairy Farm Wiring Program &
Loan Program with free inspections

Contact John Knox
Director of Member Services
715-267-6188 • 800-272-6188



Dick Adler, Manager
John J. Knox, Editor

124 N. Main Street
P.O. Box 190
Greenwood, WI 54437

Your Touchstone Energy® Partner



e-mail us at info@cecoop.com or at jknox@cecoop.com

WWW.CECCOOP.COM

Board holds annual system tour

Directors tour area facilities to learn from customers

Your directors annually travel around the system, meeting some of the major businesses and touring their facilities to better understand their business and their electricity needs. The board is interested in advancements that are happening in the major fields of business and how they affect our ways here in Central Wisconsin.

This year, the directors toured the new farm expansion of Norm-E-Lane Dairy Farm in Chili, operated by Jerry, Dave, Jeremy, and Josh Meisner.

The Meisners have built a new facility, which now milks around 1,000 cows with expansion plans for 1,500 by next summer. They currently milk in three shifts with some of the most advanced milking parlor equipment in use. As each cow enters the milking area, it is registered electronically and its milking stats are logged onto a computer. The information gathered allows the Meisners to know how much milk a cow is giving and when cows are getting ill or are ready to be bred; it's quite high-tech.

Because of the way the farm is operated, reliable electricity is very important, as they need to be milking around the clock. To solve this problem, Clark Electric Cooperative helped the Meisners install a standby generator that provides emergency backup power and also qualifies them for a reduced rate under our load management system. During the peak periods (high usage of electricity) when the generator is operated to reduce the system load, the Meisners receive a special electric rate. To qualify for this



Director and dairy farmer Ron Schmidt talking to Jerry Meisner, partner of Norm-E-lane farms about dairy practices and the future of dairy farming.

special rate, a member must have 3-phase service and an automatic generator, which Clark Electric Cooperative can help the member obtain.

The board also toured Fiskars Manufacturing located in Spencer. The board had been there previously, but there have been many changes and advancements in production and the type of equipment they use to manufacture scissors. Having reliable power is very important to Fiskars, as it is to all members. Clark Electric fulfills Fiskars requirements for dependable and reliable power, which makes for a great working relationship. Fiskars is a large employer in an area where many of our members work; it is an important part of our community.

Loan

(Continued from page 13)

We have been very fortunate over the years to not have to borrow often, but rather pay for the improvements with our own general funds. In the 40 years I've been here, we used up an REA loan in the early '60s and had only one other loan in the early '80s. Looking forward though, I doubt that we will be able to go another 20 years without a loan again, but time will tell.

In a future issue, we will be reporting on the annual meeting survey that was conducted. I'm sure it will take a while to get it tallied up.


Dick Alder
CEO / General Manager

Time-of-Day Rate

The Time-of-Day rate is now available again to members. An additional hour has been added to the on-peak hours. The new hours will take effect when the new AMR meter is installed. If you would like to be on this rate, please contact the Clark Electric office and ask for the Billing Department.

On-Peak 6:30 a.m. to 9:30 a.m.
5:30 p.m. to 9:30 p.m. *
*(1 hour added to peak time)
\$0.12/kwh

Off-Peak the remaining hours
\$0.032/kwh

The time is now

Consider geothermal this year before it's too late

Winter will soon be approaching. No one wants to think about heating yet, but you'd better start. Did you pay too much for your gas or oil last year? Do you really want to spend way more than you need to this year?

Then you should start thinking of getting an Econar geothermal heating and cooling system installed before it's too late. It's time to contact Clark Electric Appliance & Satellite to see what you could save this year by having a super-efficient geothermal unit installed before winter is here. Rita Sladich and John Koschak can help you size up your house and show you the geothermal system's potential.

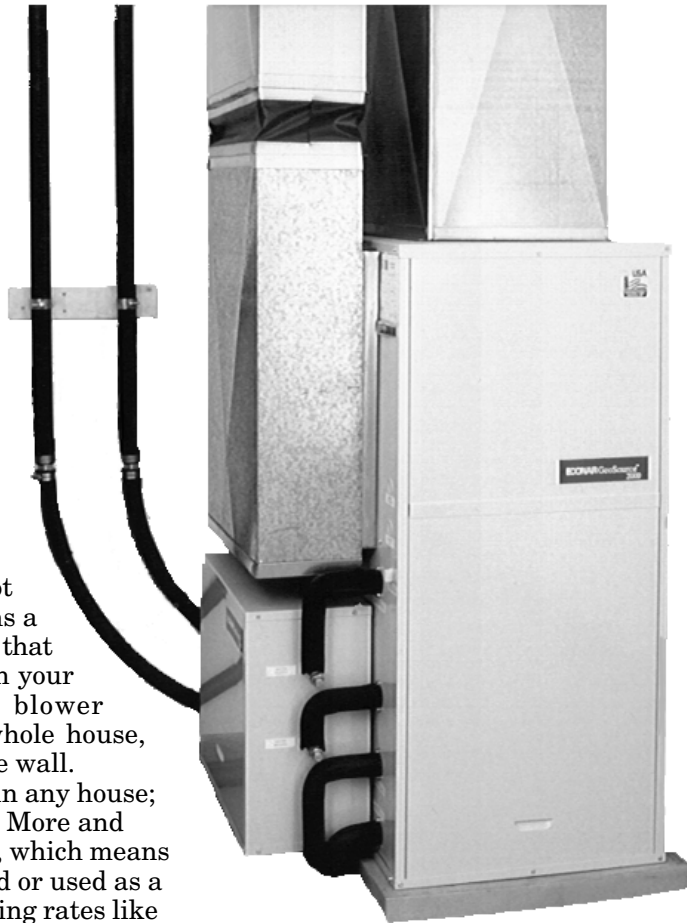
Imagine, if you would, that your heating and air-conditioning bill for this year would be \$2,030. That's quite a bit of money, but not out of the ordinary, especially with last year's fuel prices. How close is that to what you paid last year for your heating and cooling? Now, how would you like to have an annual heating and air-conditioning bill of just \$365? Do you believe it's possible? It is; that's what a comparable geothermal unit would cost to operate. These two estimates come from the same house, using the exact same data, making sure that apples are compared to apples.

By having a geothermal system installed this fall by Clark Electric Appliance & Satellite, you too can save lots of money and live in perfect comfort. Yes, comfort—that's another big benefit of having geothermal heating and cooling. Geothermal does not overheat the house, but maintains a constant temperature throughout; that means no warm and cold spots in your house anymore. The efficient blower moves the air throughout the whole house, without the curtains flying up the wall.

Geothermal can be installed in any house; it's not just for new construction! More and more homes are being retrofitted, which means the old heating system is removed or used as a backup to qualify for special heating rates like those offered by Clark Electric. The geothermal is installed utilizing the same ductwork that the house previously used; this saves on the cost of installation. By having the old fossil fuel system as a backup, you would then qualify for Clark Electric Cooperative's Dual Fuel heating rate.

With the Dual Fuel rate, electricity for the geothermal unit is metered at \$0.032/kwh for those who use all electric to heat their house (that's what geothermal is considered). For this low rate, you allow us to shed the electricity to the geothermal unit during peak usage times, and all of this is done automatically; you, the member, never have anything to worry about.

The best way to get more information about geothermal is to stop in and talk to Rita Sladich at our Appliance & Satellite office, which is right next door to the main office of Clark Electric Cooperative. Rita can give you information and show you others who have benefited and saved over the years because they installed geothermal heating and cooling in their homes.



You too can have a geothermal unit like this and save money on your heating bill. The unit replaces your existing furnace and utilizes the existing ductwork, reducing your costs.